

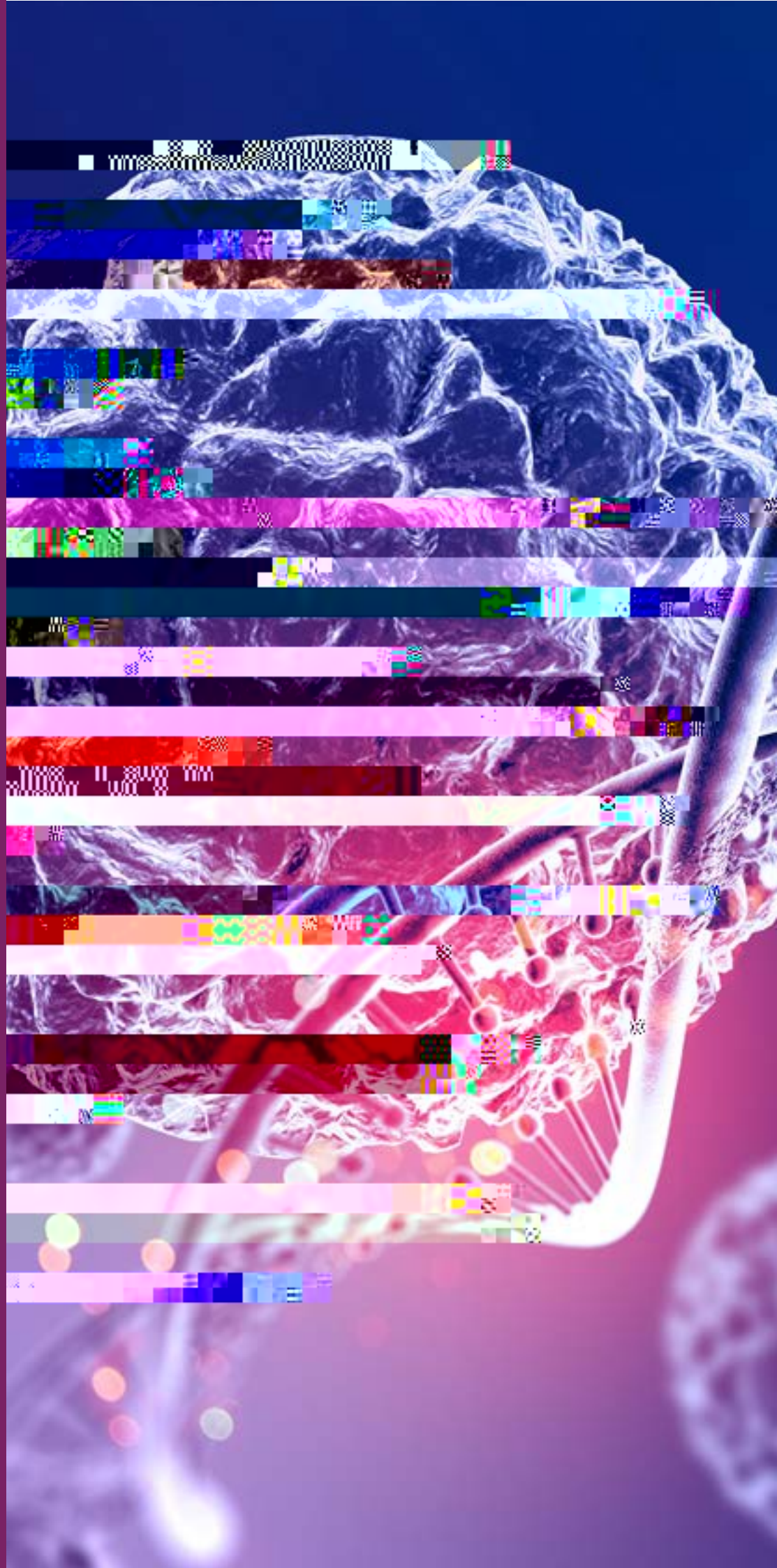
W  
SIXTH  
FORM



January

# SCIENCE

YEAR 12



## Contact



David Frith  
WPT Science  
Subject Director  
[dfrith@wickersley.net](mailto:dfrith@wickersley.net)



Immerse Yourself



# Praise and Reward

Our rewards system can be broadly split into four categories: classroom level, subject level, school level and privilege rewards. We'll focus on classroom and subject rewards here - for more information about our rewards schemes, please see our website.

## CLASSROOM LEVEL REWARDS

Awarded for: working hard, taking risks and rising to a challenge, making mistakes and learning from them, helping others, and taking pride in the school community.

Rewarded by: praise postcards, positive phone calls to parents/carers, positive text messages home, and lesson based prizes.

## SUBJECT LEVEL REWARDS

Reward scheme: Star of the Week, Curriculum Awards (Subject/School Way, Participation, Working with Pride, Embracing the Whole Curriculum), High Flyer, Extra Mile, Most Improved.

Rewarded by: certificates

# Broadening Horizons

Our intent is that all students have a full understanding of how to develop themselves as well rounded citizens, maintain healthy relationships and understand how to keep themselves safe both online and in their day-to-day life. We want all students to know what options are open to them in the future and understand the routes they have in order to progress on their life journey.

Just some of the things our curriculum includes:

- Links with local industries and national organisations providing opportunities for students to engage with innovative external speakers, events and resources
- Opportunities for students to visit University Science Departments and experience exciting and engaging cutting edge science days to raise the aspirations and awareness of our students
- Science based activity days to engage and enthuse students in STEM subjects including the UKROC challenge
- Encouraging students to develop their own projects and interests in the local and national environment

Students can also develop their science skills and knowledge further by visiting Science Museums further across the UK that have science museums and exhibits. Click on the logos below for more information!

## Museum of Zoology - Cambridge University

The Museum holds many wonderful treasures, such as specimens discovered by the great naturalists, including Charles Darwin and Alfred Russel Wallace. The collection contains approximately two million items and thousands of these are on display.



## Lapworth Museum of Geology - Birmingham University

From rocks and fossils to volcanoes, earthquakes, and even dinosaurs, the Lapworth Museum captures the imagination of all visitors as they explore life over the past 3.5 billion years.





Have Your Say... ➔

At WPT we're always looking for feedback. If you have any thoughts/opinions on this Curriculum Newsletter, its content or the curriculum in general, please scan the QR code to fill out a short feedback form.