

Wpt central isolation provision  
Thrybergh Sports Centre,

# Contents

**03** Introduction

**04** Provision Aims

**06** Isolation Staf

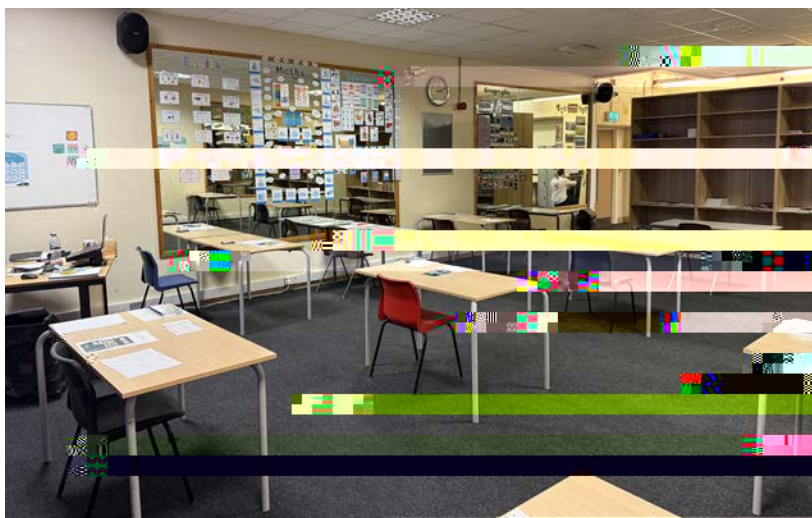
**07** What to Expect

# Central Isolation Provision

The WPT Central Isolation Provision is located at Thrybergh Sports Centre, which is adjacent to Thrybergh Academy.

It is important to note that this facility operates independently of the school, featuring its own separate entrance for access.

This arrangement ensures that the isolation provision can be accessed from the school grounds.





Key objectives of such provisions often include:

**1. Behavioural Support**

behaviour and learn coping strategies in a structured environment.

**2. Personalised Learning**

Providing tailored educational support to meet individual student needs, helping them catch up on missed work or continue their studies.

**3. Social and Emotional Development**

Supporting students to develop social skills, emotional resilience, and strategies to reintegrate successfully back into the mainstream setting.

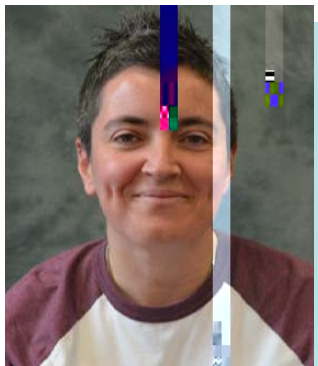
**4. Safety**

Ensuring that both the isolated student and the larger school community are safe by managing behaviours that may be disruptive or harmful.

**5. Reintegration**

Facilitating a smooth transition back to the main school environment, ensuring that students are equipped and ready to succeed.

# Isolation Staf



**Mrs M Atkin**

Senior Isolation Manager for Wickersley Partnership Trust



**Mr J Turner**

Teaching Assistant for Isolation

# What to Expect

On arrival at the Provision, students will be required to place their belongings (including mobile phone) into an individual locker. This is to ensure that all possessions are end of the day.

Students should work quietly and independently, where possible on tasks provided either by their class teachers or platforms so students can access revision, homework, coursework and additional learning.

The room is separated into 2 areas, described as follows:

## **Short Term Isolation Room**

This is the larger area of the room and caters for a maximum of 12 students (3 per school). It is designed for students who require a period of 1 -3 days isolation.

## **Longer Term Isolation Room**

This room is set in the smaller section of the room, and it is for a maximum of 4 students (1 per school). It is designed for students who need a longer period of isolation away from their school setting.

## **Intervention Room**

The Intervention room is a space where we can tailor

by schools. This is in a separate area so as to ensure that students are free to speak without being overheard by others.



WICKERSLEY  
PARTNERSHIP  
TRUST.